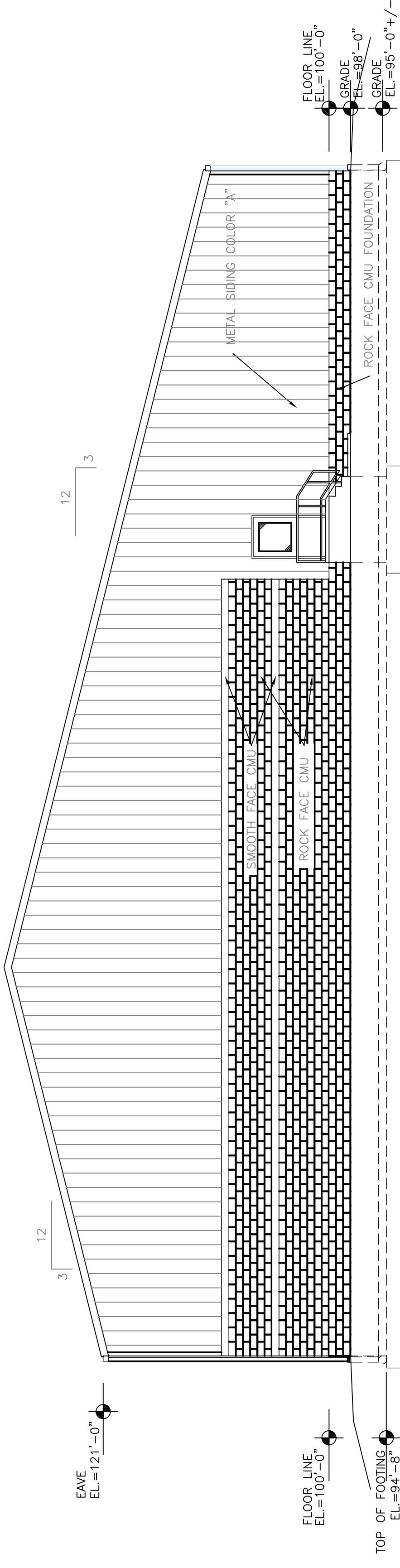


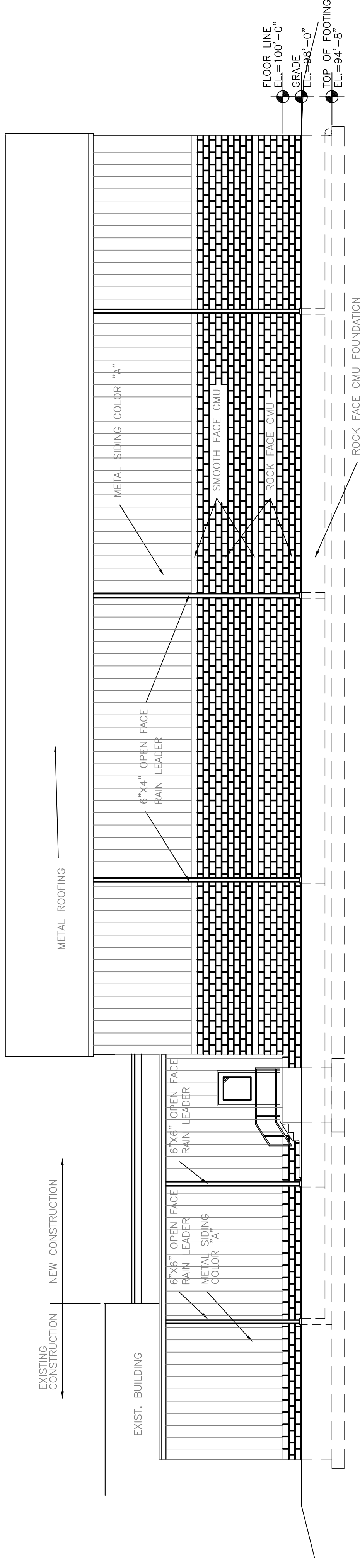
3 EAST ELEVATION (ALTERNATE BID)

A2.0
SCALE: 1/8" = 1'-0" (2X3/4)
SCALE: 1/16" = 1'-0" (11X17)



2 SOUTH ELEVATION (ALTERNATE BID)

A2.0
SCALE: 1/8" = 1'-0" (2X3/4)
SCALE: 1/16" = 1'-0" (11X17)



1 WEST ELEVATION (BASE BID)

A2.0
SCALE: 1/8" = 1'-0" (2X3/4)
SCALE: 1/16" = 1'-0" (11X17)

DRAWN BY: GFN
ESTIMATED BY: xxx
SALESMEN: xxx

REVISIONS:
DATE REVISION
6/28/2013
BUILDING EXTERIOR

PRELIMINARY ONLY
NOT FOR CONSTRUCTION

AYSHFORD
architecture planning inc
2141 Sherwin Drive
St. Louis Park, MN 55425
5417 Project Number: 000000

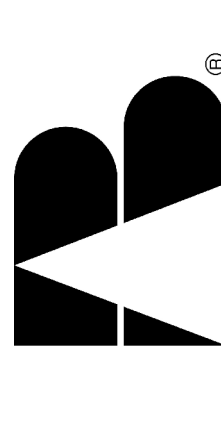
I hereby certify that this plan was prepared by me or under my direct supervision and that I am a duly registered architect under the laws of the state of Minnesota.

Randall L. Aysford
REG. NO. 21268
DATE: -

This drawing and the information it contains is the property of A.B. SYSTEMS, INC. It must not be copied, traced, or released without our consent.

PROJECT TITLE:

IMMANUEL LUTHERAN CHURCH and SCHOOL - SILO / 2013 ADDITION
22591 County Road 25, Lewiston, mn



A.B. SYSTEMS, INC.
Designer / Builder / Developer
Since 1972
209 Wood Lake Dr. SE.
Rochester, MN 55904
(507) 288-9397

SHEET TITLE:

BUILDING ELEVATIONS

SHEET NUMBER:

A2.0

PROJECT NUMBER:

2013-059